

# MILL POND VILLAGE



## Amenities

- One-Story Living
- Cathedral Ceilings
- Front & Side Porches
- Master Bedroom Suite w/ Large Walk-In Closet
- Guest Room
- One-Car Garage Accessed by Home
- Full Basement

## Community

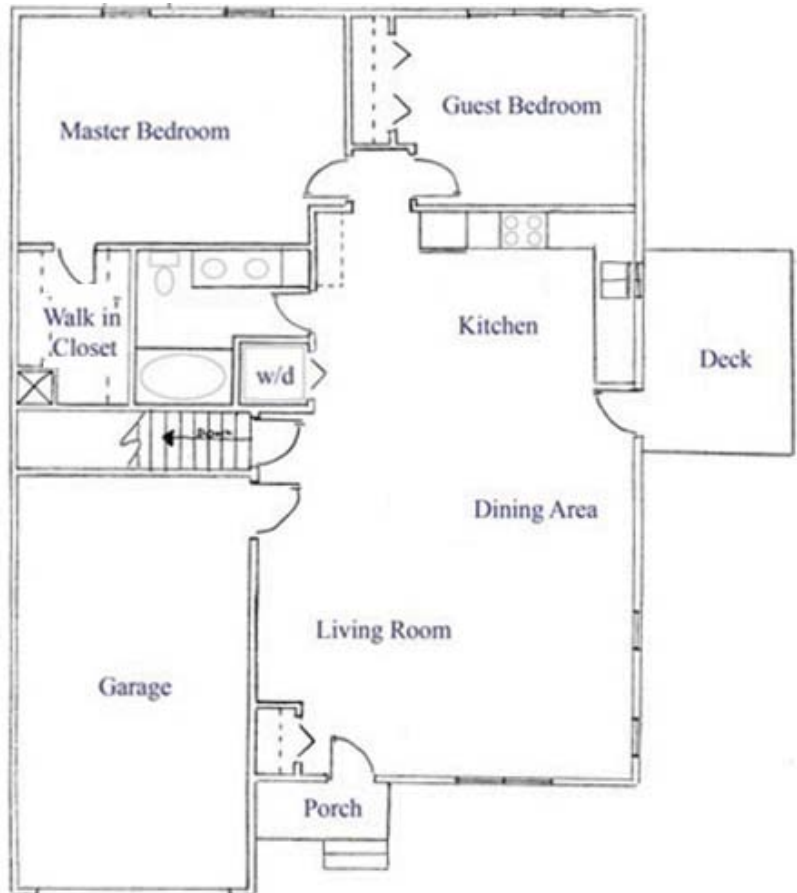
- 20 Minutes from Downtown Providence
- Close Proximity to Worcester, MA
- Minutes from Crystal Lake Golf Course, *Named one of 100 "must play" golf courses in New England for three consecutive years*

Total Living Space Approximately  
1,150 Sq.Ft.

Wakefield Starting From:  
\$229,900



## Wakefield



*Elevations shown may be conceptual. Floor plans may vary according to elevation and figures reflecting size, square footage, and other dimensions are estimates; actual construction may vary. Size and square footage of your home may vary based on expandable area and options selected. We work to continuously improve our homes, therefore E.A. McNulty Real Estate reserve the right to change plans, dimensions, features, specifications, materials, and availability of homes without notice or obligation.*